

User Manual

RED LIGHT HAIR CAP



Thank you for purchasing our cap, we hope you can reap benefits of red light therapy at home.

Red light hair cap is a hair loss treatment and hair growth equipment, it helps to weakened hair follicles, strengthen the growth of hair follicles, promote healthy hair growth, and stimulate hair regeneration. It also improves sleep, emotional well-being and memory.

Specifications

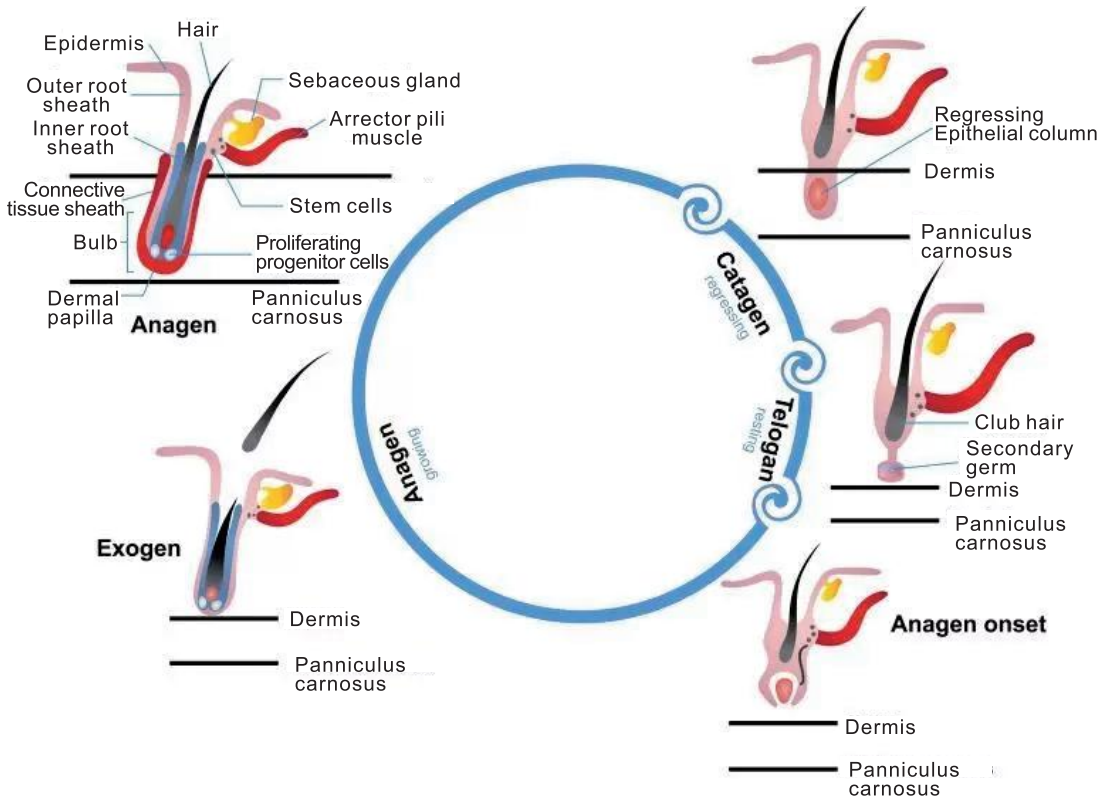
Number of LEDs	136pcs
LED Chip	3chips,total (660nm*136pcs,850nm*272pcs)
Power Supply	Non-removable Charge Controller
EMF	0
Irradiance	45 mW/cm ²
Power Consumption	6.5 W
Function	Timing(20mins), dimming(P1,P2,P3), Pulse (10Hz,40Hz,Breathing light mode)
Battery Capacity	2500mAH
Dimensions	Cap Circumference: 56.5-69.8cm (22.25-27.5")
	Cap Depth: 13cm (5.12")
	Cap Brim: 18cm (7.09")
Material	Neoprene base fabric + SBR
Application	Head

Packages including



- 1*Red light hair cap
- 1*USB cable(1m)
- 1*Storage bag
- 1*User manual

👉 How it works for hair regrowth?



Low-level laser therapy also referred to as red light therapy and cold laser therapy-irradiates photons into scalp tissues. These photons are absorbed by weak cells to encourage hair growth. It's widely accepted that the procedure is safe, tolerable, and less invasive than hair transplant surgery.

👉 What is Red and Near Infrared Light Therapy?

Our Red light therapy caps' Wavelengths are 660nm/850nm
 Red and near-infrared light are part of the electromagnetic spectrum, and more specifically, part of the spectrum of light emitted by the sun. These wavelengths of light are "bioactive" in humans.

Procedure for using controller



Mode key: 10HZ / 40HZ / Breath

Power key: OPEN / L1 / L2 / L3 / OFF

1. Press the power key 3S turn on all LED, press it again enter the L1/L2/L3 mode. Press the button again to turn it off.
2. Press the mode key, enter the 10HZ/40HZ pulse flashing mode, and breath mode

Usage frequency

Mild: once a day, moderate: 2 times a day, severe: 3 times a day.

Notes

1. To protect your eyes, do not look directly at the LED light.
2. This product is not suitable for children or pregnant women, and should not be used by individuals with skin sensitivities or those taking skin medications. If any discomfort occurs, please consult with a doctor for guidance.
3. When using the red light therapy cap, if your scalp feels too hot, adjust the gears to a mild level.
4. The LEDs are sewn and wrapped in SBR cloth. Do not soak in water or get wet when using, but keep it dry to prevent leakage danger.
5. When cleaning the cap, make sure it is not connected to any power supply, and disconnect the power input. Clean the fabric part of the cap slightly with a toothbrush rather than cleaning the LEDs directly.
6. Unplug the cap and store in a cool, dry place. Do not immerse the cap in water or wet place.
7. To ensure its longevity, avoid exposing it to direct sunlight or high temperatures.
8. One-year warranty from the date of purchase.